



REC# #: 752804  
 RECORDED 5/8/2019 AT 1:18 PM BK# 2620 PG# 1846  
 Debra K. Lee, CLERK OF LARAMIE COUNTY, WY PAGE 1 OF 1

# STATE OF WYOMING CORNER RECORD

(In compliance with the CORNER PERPETUATION AND FILING ACT, Wyoming Statutes, 1997 Section 33-29-140, et. seq., and the Rules and Regulations of the Board of Registrations for Professional Engineers and Professional Land Surveyors)

## EAST QUARTER CORNER SECTION 7, T. 18 N., R. 63 W., 6TH P.M., LARAMIE COUNTY, WYOMING

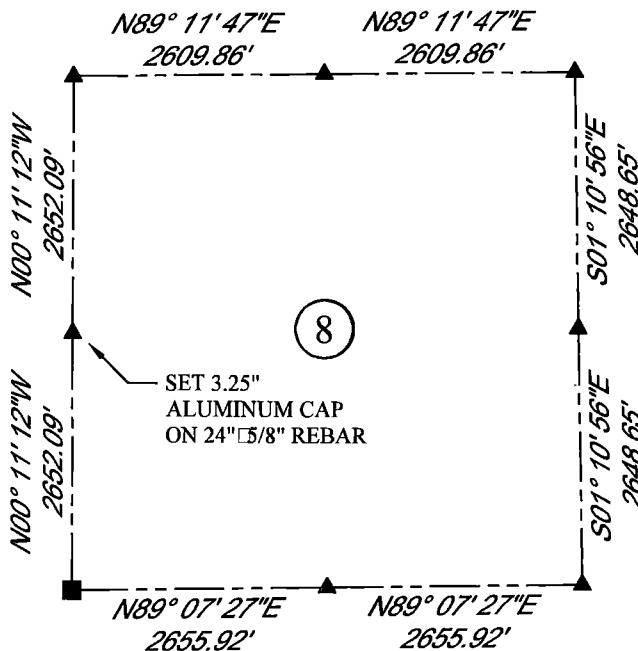
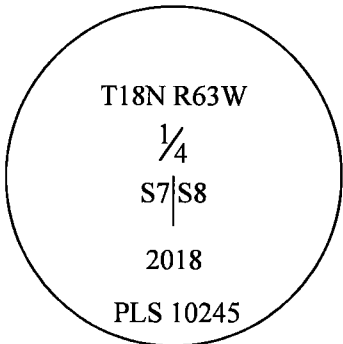
GLO: SET A SANDSTONE 16X10X4, 10 IN. DEEP, MARKED 1/4 ON W. SIDE FOR 1/4 SEC. COR.

FOUND: NOTHING. SET ALUMINUM CAP AT PROPORTIONATE (SINGLE) DISTANCE.



SCALE: NONE  
 NORTH DETERMINED BY  
 G.P.S OBSERVATIONS

SET 3.25" ALUMINUM CAP ON  
 #5 REBAR, AT SURFACE,  
 STAMPED AS SHOWN. SET 2  
 MAG NAILS IN 2 FENCE POSTS  
 TO THE EAST 8'.



**LEGEND:**

- FOUND BLM CAP
- FOUND USFS CAP
- FOUND STONE
- FOUND PRIVATE MONUMENT
- ◆ CALCULATED POSITION
- ▲ SET MONUMENT (LS10245)
- SECTION LINE

DATE OF FIELD WORK: 9/25/2018 OFFICE REFERENCE: MERIDEN

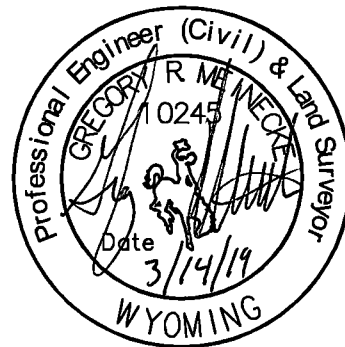
**CROSS INDEX DIAGRAM**

	1	2	3	4	5	6	7	8	9	10	11	12	13	14	15	16	17	18	19	20	21	22	23	24	25
A																									
B																									
C		6																							
D																									
E																									
F																									
G		7					●																		
H																									
J																									
K																									
L		18																							
M																									
N																									
O																									
P		19																							
Q																									
R																									
S																									
T		30																							
U																									
V																									
W																									
X																									
Y																									
Z																									
	1	2	3	4	5	6	7	8	9	10	11	12	13	14	15	16	17	18	19	20	21	22	23	24	25

WOOD  
 2615 AVIATION DRIVE  
 SHERIDAN, WY 82801  
 PH: 307-675-6400



THIS CORNER RECORD WAS  
 PREPARED BY ME OR UNDER  
 MY DIRECTION AND  
 SUPERVISION,  
 SEAL AND SIGNATURE



CORNER NAME: EAST QUARTER  
 SBRPELS/PLSW: MARCH 1994; PLSW JANUARY 1998

SECTION: 7

T. 18 N., R. 63 W. ; 6TH P.M. CROSS-INDEX # G-5